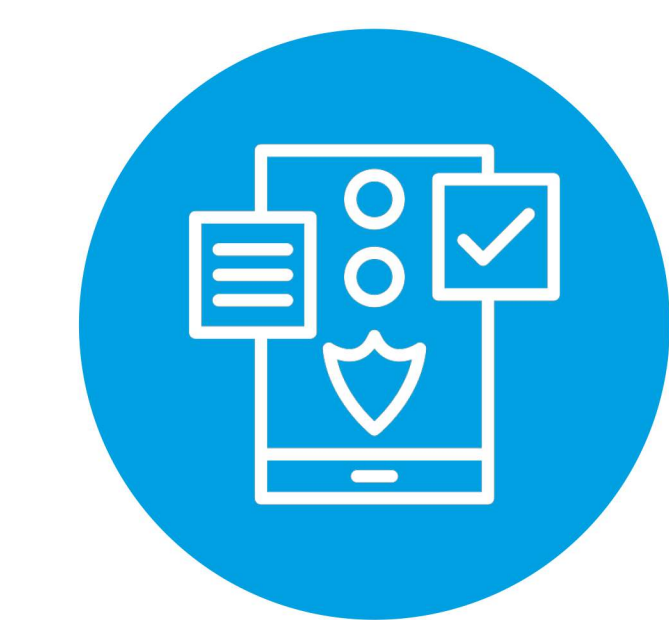




# YOUR HEALTH & CARE MADE EASY

## HEALTH MAX

Optimize the well-being of your extended family with the **HEALTH MAX** Plan which gives you the peace of mind when it comes to the health of your family



**Plan Type**  
Floater (2A2C)



**Family Definition**  
2 Adults  
2 Children



**Relation Allowed**  
Self, Spouse,  
Son, Daughter



**Child**  
1 Day to  
25 Years



**Adult**  
18 Years to  
85 Years



**Validity**  
1 year

**Customer Price**

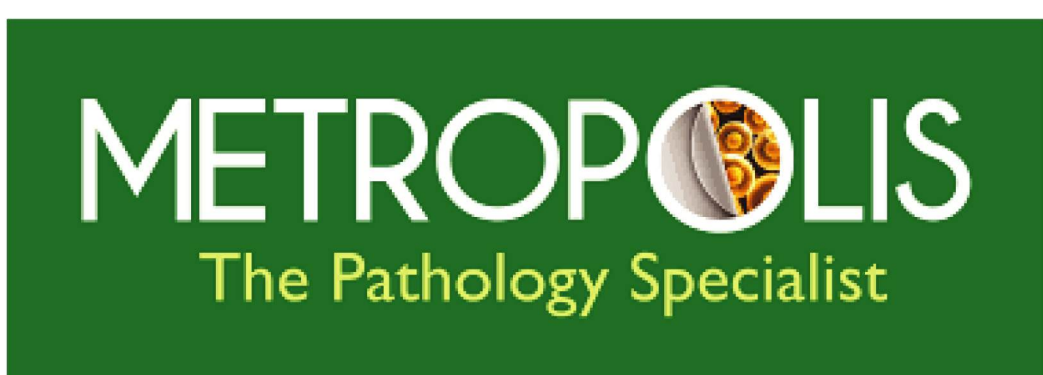
**Rs.  
41,300**

Main Benefits	
Fitness (Yoga, Zumba, MMT)	75 Sessions
Prescribed Diagnostics via HA App	Rs. 15000
Tele Consultations (GP + Specialists)	Rs. 7500
Annual Health Checkup (56 Parameters)	4 Credits
Face2Face: GP + Specialists (Dietician, Optha, Pedia, Gyni, Dental)	Rs. 7500
Tele Consultations (Diabetologist)	Rs. 500
Dental Checkup Via Reputed Provider	Rs. 500
Eye Checkup	Rs. 500
Platform Benefits	
Upto 50% discount on tests, scans, packages on network	Unlimited
Upto 20% slab-based discount on Pharmacy orders via HA App (Standard delivery charges applicable)	

Terms and Conditions

- Services have to be availed on the HealthAssure network
  - No reimbursements will be entertained
  - Diagnostics: Free booking of Lab tests, Scans, & Packages up to the MRP amount of wallet
- Fitness: Users can access LIVE interactive classes streamed online by expert coaches
  - Selected pin codes are serviceable by the Dental Consultation provider
  - Annual Health Checkup: Pre-curated health packages to be booked from the HealthAssure APP

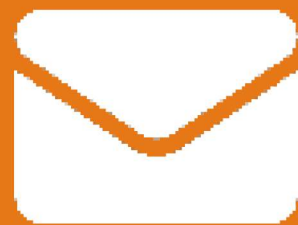
### OUR TRUSTED PARTNERS



and more...

For more details refer to  
the Terms and Conditions

To Know More, Get In Touch



support@healquorahealth.com